

YUNO B

universal multi-configuration integrated system

Robust, compact and stylish POS system

YUNO B is the upgraded version of the YUNO POS system; robust, stylish and compact, it suits the many applications of the POS vertical sectors.

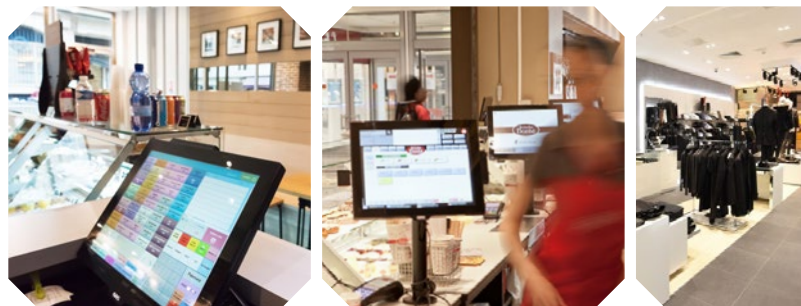
A fanless, flexible and high-performance hardware, it offers a choice between 3 different processors; the system is available in 2 formats (traditional 4:3 15.1" screen and Wide 16:9 15.6" screen) and equipped with a shock- and scratch-proof, multi-touch, projected, capacitive screen (10 point PCAP technology).

Very flexible, YUNO B is available with VESA fixings options (for wall or pole mounted solutions).

The standard version features a 128GB flash disk (SSD-M.2) and stands up to dirt in the toughest settings (fat, crumbs, dust, splashes and leftovers in kitchens, restaurants and bakeries). It integrates energy efficient processors (Kaby Lake i5, i3 or 3965U) and a heat-dissipating aluminium structure, ensuring compliance with environmental standards (low carbon footprint).



YUNO B is an accessible product whose many features (technology, ergonomics, flexibility and design) make it good value for money. It constitutes a sensible, cost-effective and long-term investment for any POS IT equipment.



TOUCH THE DIFFERENCE

YUNO B



Kaby Lake I5 / I3 or 3965U processors
 SSD - M.2 - 2 slots - 128 GB (up to 512GB)
 Projected, capacitive, multi-touch screen (10 point - PCAP)
 4:3 or Wide formats (15.1" or 15.6")
 4 GB, 8 GB, 16 GB memory – up to 32 GB
 Tilting base: 0-90°
 Discreet yet easily accessible connectivity
 Mini DP output for 2nd screen
 Energy efficient processors for low carbon footprint
 Available with VESA bracket option(s), for wall and pole mounted installations



| MODEL | YUNO B |
|--------------|---|
| Processor(s) | KabyLake i3-7100U or i5-7300U – or Celeron 3965U (fanless) |
| RAM | DDR4 – 4 GB (STANDARD), 8 GB, 16 GB (up to 32 GB) |
| SSD | M.2 – 128 GB (up to 512 GB) 2 slots |
| LCD | 15" TFT (1024 x 768) or 15.6" (1920 x 1024) (wide format in full HD) LED back-lighting |
| Touchscreen | Flat, zero bezel & multi-touch screen with projected, capacitive panel (10 point PCAP) |
| Brightness | 15" 400 cd/m ² , 15,6" 300 cd/m ² , 15,6" 450 cd/m ² |

| INPUT-OUTPUT PORTS | |
|--------------------|--|
| Serial | 4 serial ports (+ optional 5/12 V power supply for COM3 / COM4) |
| USB | 4 x USB 2.0 + 2 x USB 3.0 |
| LAN | 10/100/1000Base-T |
| 2nd Screen | Port with support for HDMI, DVI and VGA (mini Display Port) |
| Cash Drawer | 24/12 V DC |
| Audio Power Supply | Internal loudspeaker, headphones, micro jack plug + external 19 V DC |
| Mini-PCI Express | 1 Mini PCI Express slot (WIFI) |
| TPM2.0 | on all boards |
| vPro | on i5 board |

| MISCELLANEOUS | |
|------------------------|---|
| EMI | CE/FCC Class B |
| Security | LVD, external adaptor UL c/us, CE, TUV, etc. |
| Operating Temperature | 0-40 °C |
| Front | Dust- and splash-proof |
| Colours | Black (STANDARD) or White |
| Materials | Polycarbonate (cover) + aluminium (structure) |
| Dimensions (W x D x H) | 360.1 x 171.5 x 316.1 mm (15.1" format) 402.2 x 171.5 x 295.3 mm (15.6" Wide format) |
| Weight | 10 - 11 kg depending on the option (15.1" format) 11 - 12 kg (15.6" Wide format) |
| Compatible OS | Windows 10 IoT Enterprise |

| OPTIONAL EXTRAS | |
|-------------------------------|--|
| Multi-Technology reader | for combined reading of MSR and RFID (high and low frequencies), Bluetooth (BLE), NFC... |
| Addimat and/or Dallas readers | 1 slot, at right of EPOS terminal |
| Bare-code scanners | 1D & 2D |
| Fingerprint reader | Yes |
| Customer display | 20 characters x 2 lines (VFD) |
| 2nd screen | 10.1" - 16:9 1024 x 600 Flat LED screen (POS digital display) |
| WIFI | Internal, 802.11 b/g/n |
| VESA fixings option(s) | For wall or pole-mounted applications (no base nor stand). |

Specifications are subject to change without notice - © AURES 2020